

Industrial & Domestic Piping Solutions

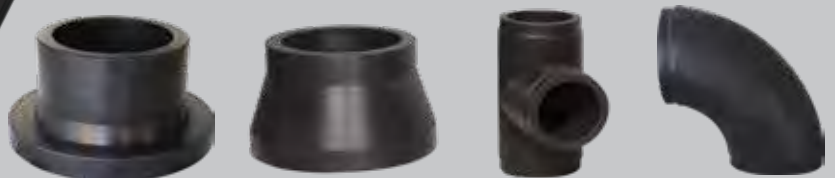
Under One Roof

SHK[®]
HDPE Pipes & Fittings



Size of HDPE Pipes

20mm to 450mm



ISO 9001 - 2015 certified company

www.shreeharikrishna.net

SHK POLYMER INDUSTRIES, a trustable brand and a leading Manufacturer of PPR and HDPE Pipes and Fittings, are here to provide you the best manufactured pipes using the Raw Material procured from the most reliable sources in the world. SHK Polymers Industries is an ISO 9001-2008 certified company having an experience of more than 40 years.

We provide best quality HDPE pipes having a wide range in terms of Size (20 mm to 125 mm- Coil as well as Pipe form) & (125mm to 450 mm- Pipe Form) and in terms of Pressure (PN 4, PN6, PN 8, PN10, PN 12.5 & PN 16) along with the grade range of PE100, PE80 & PE63.

HDPE Fittings:

1. Pipe End (S/N & L/N)
2. Tail Piece- 180 mm Long (Upto 160 mm)
3. Sliphon Flange
4. Blind Flange
5. End Cap
6. Moulded Elbow (Upto 315 mm)
7. Moulded Tee (Upto 315 mm)
8. Reducers & Fabricated Reducing Tee

SHK[®] HDPE Pipes :

Applications

- Water Supply Scheme
- Sewage Piping System
- Chemical Industries
- Plant Effluent disposal
- Waste Water Disposal pipeline
- Lift Irrigation system
- Agricultural
- Fuel Gas Distribution
- Construction industry
- Electrical cable ducting
- Marine & Dragging piping

Features & Characteristics

- Corrosion resistance
- Light weight & Flexible
- Impact resistance & Tough, Durable
- Smooth surface-Low pipe friction losses
- Long service life
- Low electrical conductivity
- Environmental friendly
- Good weldability
- Easy to install with butt fusion welding
- Easy to install with Electro fusion technique

Advantages of Use

- Long track record of excellent performance, approaching 50 years worldwide
- High impact and breakage resistance
- High resistance to chemicals, corrosion, decaying and abrasion.
- Higher durability & advantage of easy installation and transport without material loss.
- High resistance to direct sunlight (UV resistance for long time).
- High Stress Crack Resistance prevents inching growth of cracks.

HDPE PIPE (IS-4984 -2016) - WALL THICKNESS OF PIPE (R M GRADE - PE - 100)

Nominal	PN 4 SDR 33		PN 6 SDR 21		PN 8 SDR 17		PN 10 SDR 13.6		PN 12.5 SDR 11		PN 16 SDR 9	
	Dia.	Min	Max	Min	Max	Min	Max	Min	Max	Min	Max	Min
25							1.9	2.2				
32					1.9	2.2	2.4	2.7	2.9	3.3	3.6	4.1
40			1.9	2.2	2.4	2.7	3.0	3.4	3.7	4.2	4.5	5.1
50			2.4	2.7	3	3.4	3.7	4.2	4.6	5.2	5.6	6.3
63			3.0	3.4	3.7	4.2	4.7	5.3	5.8	6.5	7.0	7.8
75	2.3	2.6	3.6	4.1	4.5	5.1	5.6	6.3	6.9	7.7	8.4	9.3
90	2.8	3.2	4.3	4.8	5.3	5.9	6.7	7.5	8.2	9.1	10.0	11.1
110	3.4	3.8	5.3	6.0	6.5	7.3	8.1	9.0	10.0	11.1	12.3	13.6
125	3.8	4.3	6.0	6.7	7.4	8.2	9.2	10.2	11.4	12.7	13.9	15.4
140	4.3	4.8	6.7	7.5	8.3	9.2	10.3	11.4	12.8	14.2	15.6	17.3
160	4.9	5.5	7.7	8.6	9.5	10.6	11.8	13.1	14.6	16.2	17.8	19.7
180	5.5	6.2	8.6	9.6	10.6	11.8	13.3	14.7	16.4	18.1	20.0	22.1
200	6.1	6.8	9.6	10.7	11.8	13.1	14.7	16.3	18.2	20.1	22.3	24.6
225	6.9	7.7	10.8	12.0	13.3	14.7	16.6	18.4	20.5	22.7	25.0	27.6
250	7.6	8.5	12.0	13.3	14.7	16.3	18.4	20.3	22.8	25.2	27.8	30.7
280	8.5	9.5	13.4	14.8	16.5	18.3	20.6	22.8	25.5	28.2	31.2	34.4
315	9.6	10.7	15.0	16.6	18.6	20.6	23.2	25.6	28.7	31.7	35.0	38.6
355	10.8	12.0	16.9	18.7	20.9	23.1	26.1	28.8	32.3	35.6	39.5	43.6
400	12.2	13.5	19.1	21.1	23.6	26.1	29.5	32.6	36.4	40.1	44.5	49.1
450	13.7	15.2	21.5	23.8	26.5	29.3	33.1	36.5	40.9	45.1	50.00	55.1

HDPE PIPE (IS-4984 -2016) - WALL THICKNESS OF PIPE (R M GRADE - PE - 80)

Nominal	PN 2.5 SDR 41		PN 4 SDR 26		PN 6 SDR 17		PN 8 SDR 13.6		PN 10 SDR 11		PN 12.5 SDR 9		PN 16 SDR 9	
	Dia.	Min	Max	Min	Max	Min	Max	Min	Max	Min	Max	Min	Max	Min
32					1.9	2.2	2.4	2.7	2.9	3.3	3.6	4.1	4.4	4.9
40					2.4	2.7	3.0	3.4	3.7	4.2	4.5	5.1	5.4	6.0
50			2.0	2.3	3.0	3.4	3.7	4.2	4.6	5.2	5.6	6.3	6.8	7.6
63			2.5	2.9	3.7	4.2	4.7	5.3	5.8	6.5	7.0	7.8	8.6	9.6
75	1.9	2.2	2.9	3.3	4.5	5.1	5.6	6.3	6.9	7.7	8.4	9.3	10.2	11.3
90	2.2	2.5	3.5	4.0	5.3	5.9	6.7	7.5	8.2	9.1	10.0	11.1	12.2	13.5
110	2.7	3.1	4.3	4.8	6.5	7.3	8.1	9.0	10.0	11.1	12.3	13.6	14.9	16.5
125	3.1	3.5	4.8	5.4	7.4	8.2	9.2	10.2	11.4	12.7	13.9	15.4	16.9	18.7
140	3.5	4.0	5.4	6.0	8.3	9.2	10.3	11.4	12.8	14.2	15.6	17.3	19.0	21.0
160	3.9	4.4	6.2	6.9	9.5	10.6	11.8	13.1	14.6	16.2	17.8	19.7	21.7	24.0
180	4.4	4.9	7.0	7.8	10.6	11.8	13.3	14.7	16.4	18.1	20.0	22.1	24.4	26.9
200	4.9	5.5	7.7	8.6	11.8	13.1	14.7	16.3	18.2	20.1	22.3	24.6	27.1	29.9
225	5.5	6.2	8.7	9.7	13.3	14.7	16.6	18.4	20.5	22.7	25.0	27.6	30.5	33.7
250	6.1	6.8	9.7	10.8	14.7	16.3	18.4	20.3	22.8	25.2	27.8	30.7	33.8	37.3
280	6.9	7.7	10.8	12.0	16.5	18.3	20.6	22.8	25.5	28.2	31.2	34.4	37.9	41.8
315	7.7	8.6	12.2	13.5	18.6	20.6	23.2	25.6	28.7	31.7	35.0	38.6	42.6	47.0
355	8.7	9.7	13.7	15.2	20.9	23.1	26.1	28.8	32.3	35.6	39.5	43.6	48.0	52.9
400	9.8	10.9	15.4	17.0	23.6	26.1	29.5	32.6	36.4	40.1	44.5	49.1	54.1	59.6
450	11.0	12.2	17.3	19.1	26.5	29.3	33.1	36.5	40.9	45.1	50.00	55.1	60.9	67.1

HDPE PIPE (IS-4984 -2016) - WALL THICKNESS OF PIPE (R M GRADE - PE - 63)

Nominal	PN 2.5 SDR 33		PN 4 SDR 21		PN 6 SDR 13.6		PN 8 SDR 11	
	Min	Max	Min	Max	Min	Max	Min	Max
32					2.4	2.7	2.9	3.3
40			1.9	2.2	3.0	3.4	3.7	4.2
50			2.4	2.7	3.7	4.2	4.6	5.2
63			3.0	3.4	4.7	5.3	5.8	6.5
75	2.3	2.6	3.6	4.1	5.6	6.3	6.9	7.7
90	2.8	3.2	4.3	4.8	6.7	7.5	8.2	9.1
110	3.4	3.8	5.3	6.0	8.1	9.0	10.0	11.1
125	3.8	4.3	6.0	6.7	9.2	10.2	11.4	12.7
140	4.3	4.8	6.7	7.5	10.3	11.4	12.8	14.2
160	4.9	5.5	7.7	8.6	11.8	13.1	14.6	16.2
180	5.5	6.2	8.6	9.6	13.3	14.7	16.4	18.1
200	6.1	6.8	9.6	10.7	14.7	16.3	18.2	20.1
225	6.9	7.7	10.8	12.0	16.6	18.4	20.5	22.7
250	7.6	8.5	12.0	13.3	18.4	20.3	22.8	25.2
280	8.5	9.5	13.4	14.8	20.6	22.8	25.5	28.2
315	9.6	10.7	15.0	16.6	23.2	25.6	28.7	31.7
355	10.8	12.0	16.9	18.7	26.1	28.8	32.3	35.6
400	12.2	13.5	19.1	21.1	29.5	32.6	36.4	40.1
450	13.7	15.2	21.5	23.8	33.1	36.5	40.9	45.1

SHK[®]

HDPE Pipes & Fittings

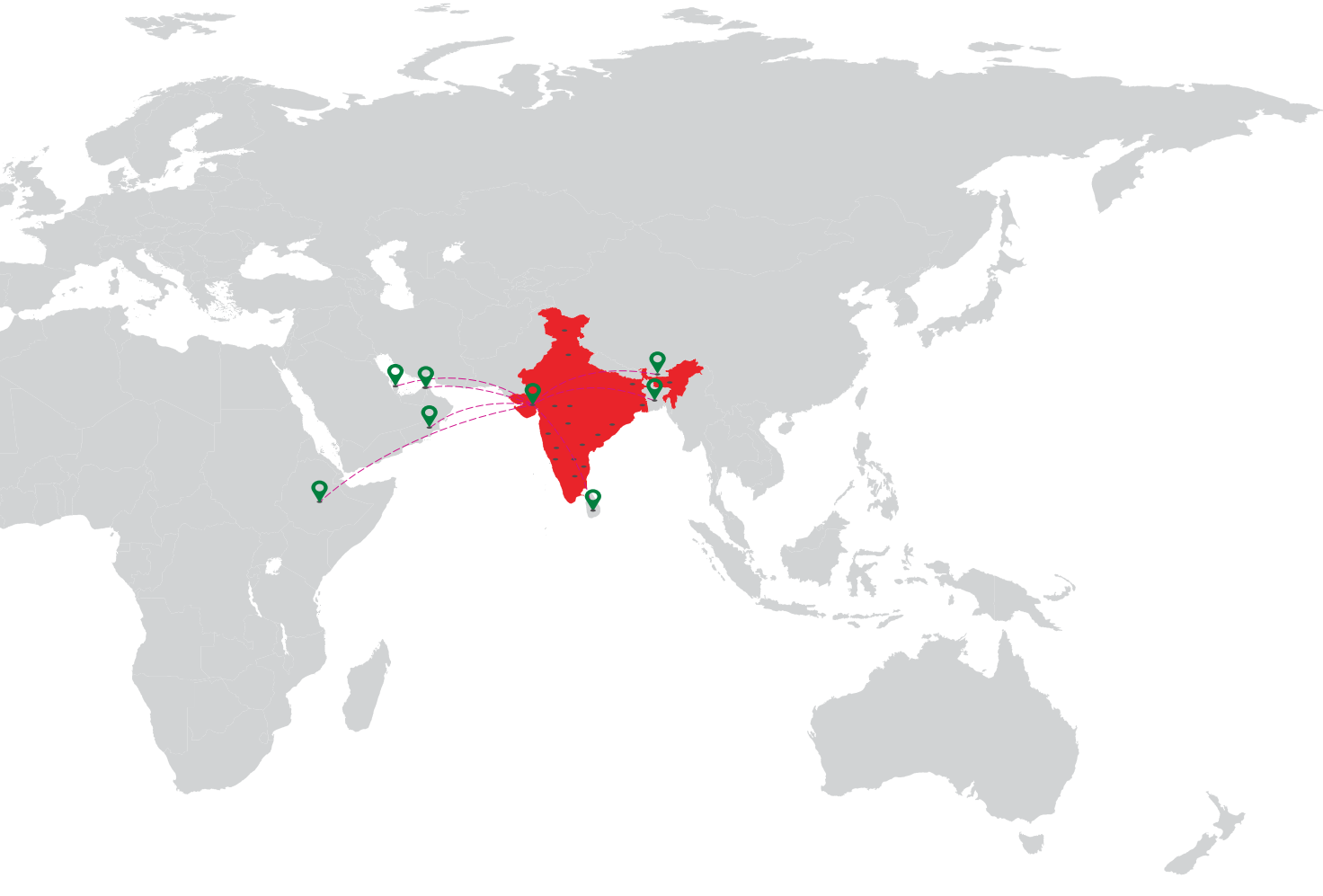


SHK[®]

HDPE Pipes & Fittings



OUR NETWORK



Domestic

- 1) Ahmedabad
- 2) Baroda
- 3) Ankleshwar
- 4) Dahej
- 5) Panoli
- 6) Surat
- 7) Vapi
- 8) Diu and Daman
- 9) Morbi
- 10) Rajkot
- 11) Gandhidham
- 12) Aurangabad
- 13) Kolhapur
- 14) Pune
- 15) Mumbai
- 16) Boisar
- 17) Vasai
- 18) Solapur
- 19) Ahmednagar
- 20) Bhuj
- 21) Selvasa
- 22) Ichhalkaranji
- 23) Dhule
- 24) Nagpur
- 25) Nashik
- 26) Indore
- 27) Bhopal
- 28) Belgaum
- 29) Bangalore
- 30) Mangalore
- 31) Mysore
- 32) Chennai
- 33) Coimbatore
- 34) Dindigul

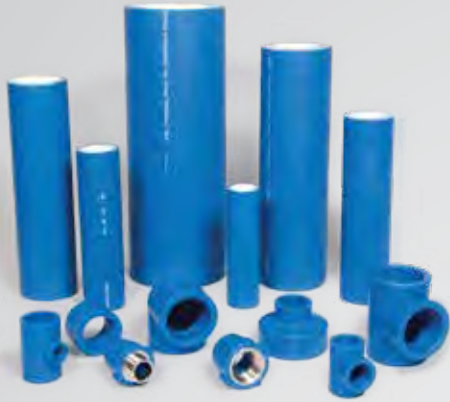
- 35) Madurai
- 36) Cochi
- 37) Goa
- 38) Hyderabad
- 39) Secunderabad
- 40) Kolkata
- 41) Siliguri
- 42) Guwahati
- 43) Jammu
- 44) Kashmir
- 45) Leh
- 46) Delhi
- 47) Patna
- 48) Vizag
- 49) Chandigarh

International

Countries

- 1) Sri Lanka
- 2) Bangladesh
- 3) Bhutan
- 4) Dubai
- 5) Qatar
- 6) Oman
- 7) Ethiopia

Other Product Range



- SHK AQUA - PPR-C Triple Layer Pipe & Coil
- SHK THERMO - PPR-C Composite Pipe: Green
- SHK PNEUMATO - PPR-C Composite Pneumatic Pipe: Blue

SHK Polymers Industries

Authorised Distributor / Dealer:

